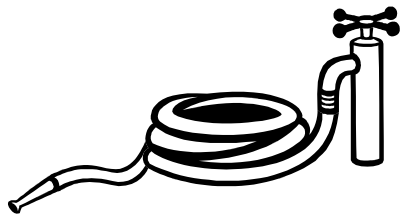


How does the service work?

One of our Community Workers will meet with you initially and if you wish to go ahead, they will facilitate a link with someone who lives near you.

Care is taken in this process to find people who are genuinely interested in offering assistance to others.

Our workers may also provide you with information about other services or activities in your local area which may assist you.



An initiative of
Home & Community Care &
UnitingCare Wesley Adelaide

Neighbourhood
Support Programs



**If you need more information
about this program, or would like
to discuss your needs, please
phone:**

Val Freeman 8375 1402

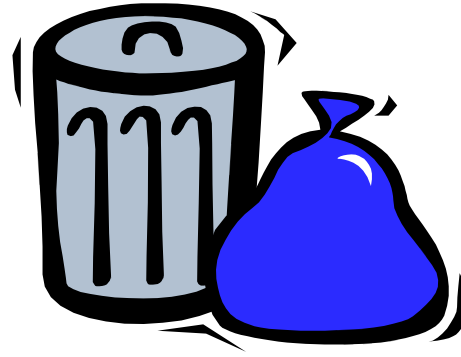
val.freeman@ucwesleyadelaide.org.au

In Your Street

Linking People
in the Community

Please Note:

We do not ask neighbours to assist with manual tasks such as, cleaning and large gardening jobs.



In Your Street?

'In Your Street' is a program which aims to foster the development of caring communities by linking up people who live in the same street or nearby.

What type of help is available?

The type of supports which we often assist with include:

- ◆ Taking the bin in and out
- ◆ Hanging washing
- ◆ Getting a few items from shops
- ◆ Getting mail from letter box
- ◆ Popping in for a chat

You may have other needs which someone can help you with and our community worker Jacqui would be happy to visit you to discuss your needs.

Can I access this service?

If you are over 60 years, a person with a physical disability, or a carer and you are finding small tasks around the home difficult to manage, perhaps we can be of assistance through the 'In Your Street' program.

This service is free of charge.



Links between neighbours can relieve isolation and may make the difference between someone remaining in their own home and needing to move into more supportive accommodation.

We also feel safer when we know someone like a neighbour can be contacted in times of emergency.